

Hive  
k i t c h e n s

Brochure — 2023



Kitchens — for Big Green Egg





# Extraordinary Outdoor Kitchens

Near the end of the cliff is where the most beautiful flowers bloom. This figure of speech embodies our vision on design, form & function. Finding ourselves on the edges of what is possible in design, choice of materials & technics without compromising on the most important aspect: quality. Operating on this delicate edge is the core of our vision to provide the world with the perfect outdoor kitchen.

HIVE represents a place that is buzzing in great ambiance. A place where people of all ages and families can meet. Exactly the place that your outdoor kitchen should be. Therefore we are looking forward to be the center of your next magical outdoor moment.





# The build up

Each HIVE outdoor kitchen is customizable in color, worktop and can be upgraded with different add-ons. A HIVE outdoor kitchen is build around either a Big Green Egg Large or a Big Green Egg XL and then customized further to your wishes. Worktop, color and drawers can be changed to suit a wide array of outdoor spaces both in a modern or classic setting.

Hive Kitchens are custom build for you in the Netherlands where we assemble the kitchens in our own high-tech facility. Within 6 weeks you can have your custom build outdoor kitchen in your garden. Here it is easily placed and you can start cooking the same day and enjoy the beautiful design of the characteristic hexagons.







*Choose your  
favorite setup*



# Designers favorite

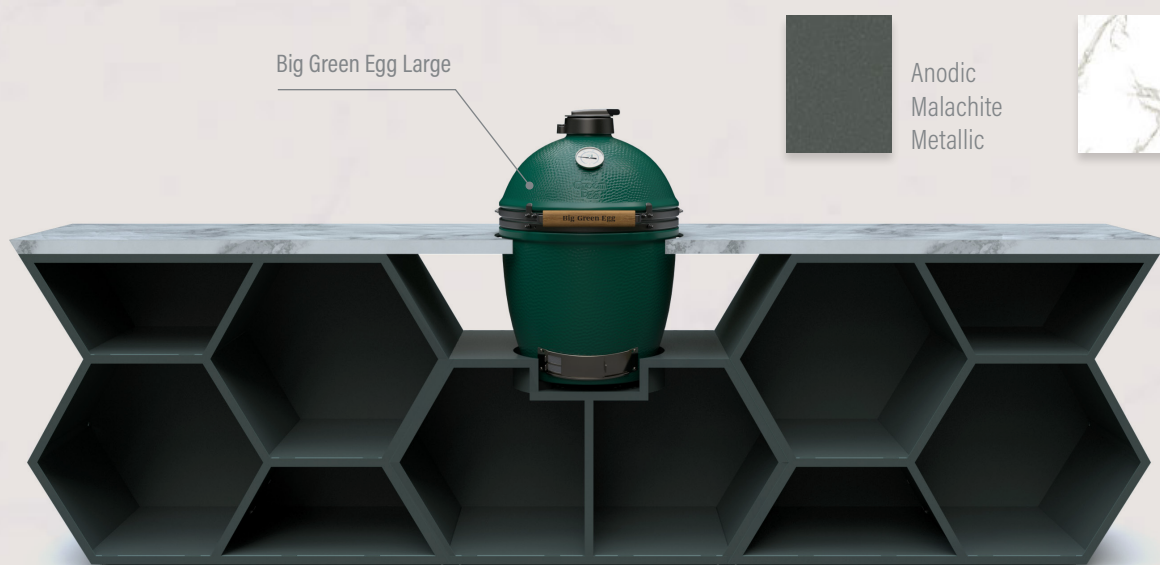
"an outdoor kitchen like an outdoor kitchen should be. Elegant, outspoken and yet both practical and durable. Not too big but most certainly not too small. Build around the Big Green Egg of your choosing (either L or XL) and a wide array of possible upgrades. This kitchen is begging to take your outdoor space to the next level."

 L 330cm x B 60cm x H 95cm

 Incl. front door shipping in Germany

 Presentation below shows the standard setup

Big Green Egg Large



Super  
Anodic  
Dusk

Dekton®  
Domoos

Big Green Egg XLarge





# Less is More

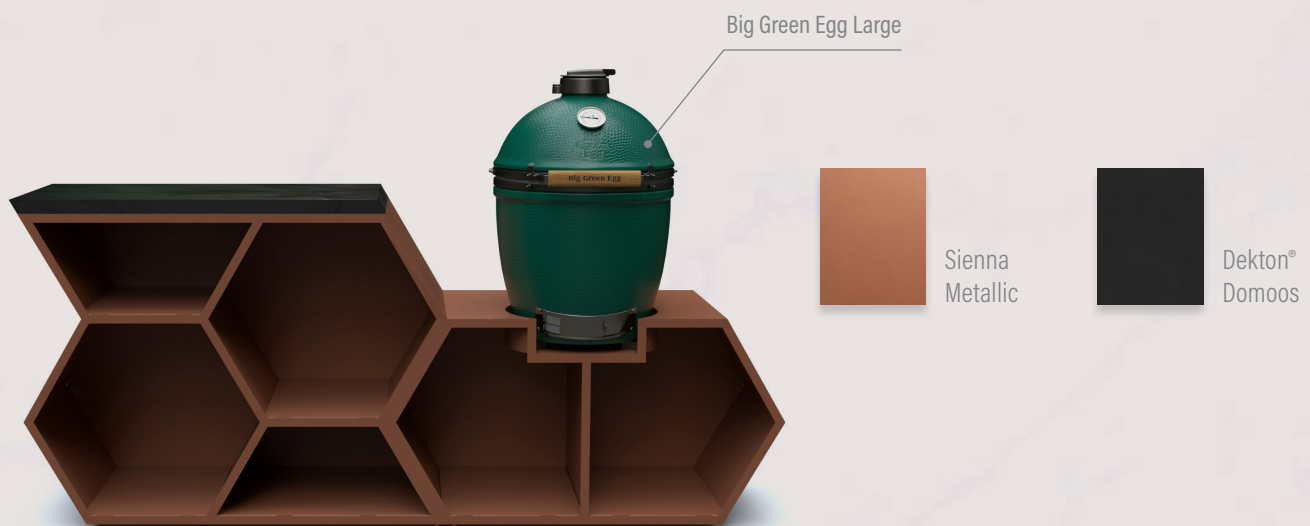
"Quality is captured in the little things. This is true for most of life's finest moments. A creamy and full bodied Chardonnay gently waving around in your glass. The sun setting over the skyline of the city. Sitting together with a good friend, an empty agenda for the rest of the evening. Some fresh langoustines simmering on the grill which is beautifully integrated in your HIVE outdoor kitchen. The "Less is More" setup catches

the essence of this feeling in its design and features in a way that is hard to describe but so easy to grasp when you know it. Sometimes less is, really more."

📏 L 220cm x B 60cm x H 95cm

🚚 Incl. front door shipping in Germany


📍 Presentation below shows the standard setup



# Easy on Sunday

"This can only be a Sunday. Two lovely entrecotes sizzling on the teppanyaki. A sauce packed with flavorful mushrooms, cream and truffle and nothing left to do but to pop open a bottle of Cabernet and enjoy the last bit of weekend. Cheers"

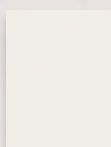
 L 180cm x B 60cm x H 95cm

 Incl. front door shipping in Germany

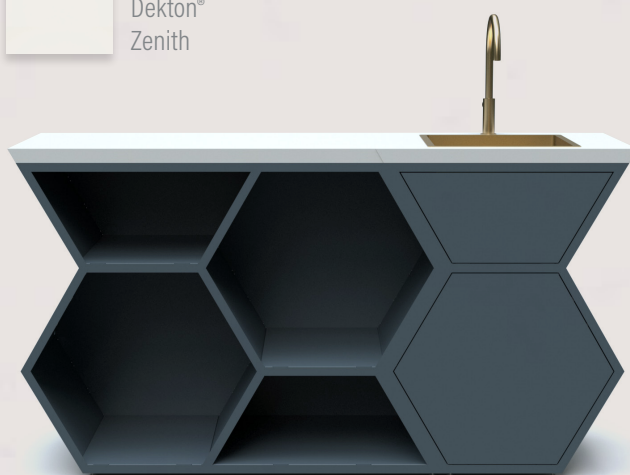
 Presentation below shows the standard setup



Anodic  
Saphire  
Metallic



Dekton®  
Zenith



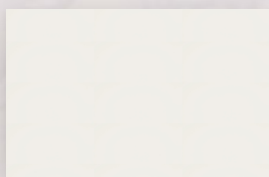




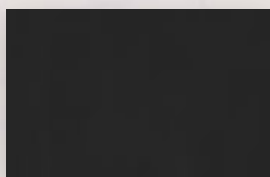


# Add someColor

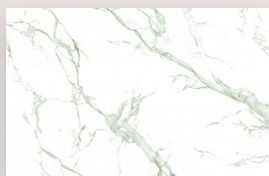
All HIVE outdoor kitchens can be customized using the following Dekton worktop finishes and the extremely durable powder coatings from Axalta.



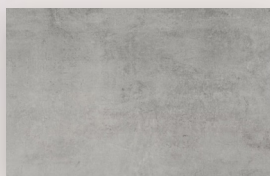
Dekton® Zenith



Dekton® Domoos



Dekton® Aura



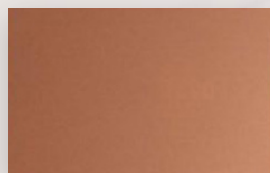
Dekton® Kreta

## Dekton worktops

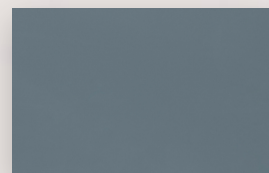
Dekton is a relatively new material that is composed by pressing materials such as porcelain, quartz and glass together under extreme high pressure. Resulting in a ultracompact, non-porous, non-scratching and non-absorbing surface that can be made in practically any color. Dekton is used as the material choice for the worktops of the HIVE outdoor kitchen because it can withstand any weather conditions and is highly durable. We offer the following colors:

## Coating process

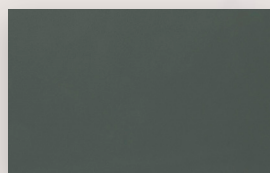
The modules used in the HIVE outdoor kitchens are made from stainless steel. In order to keep their appearance as bright and shiny as upon the first day you lay your eyes on them we provide them with a special coating. First we stain the modules in order to provide a good adhesion for the next step in the coating process: the KTL-coating. This is a process that seals the module in a fully rust and corrosion proof shield. This coating is then powder coated in a color of your choosing. All the powder coats we use are extremely durable and also used for outdoor construction and façades. We offer powder coating in the following colors:



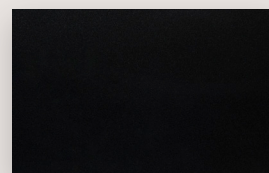
Sienna Metallic



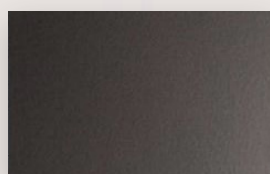
Anodic Sapphire



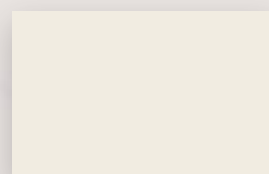
Anodic Malachite



Anodic Black



Super Anodic Dusk



Matt Off-White







*Dare to draw  
outside the  
lines*





# Choose your storage

To make your outdoor kitchen not only beautiful to look at but also practical to work with a number of high quality storage options are available.



## Cutlery boxes

Crafted from okume plex plates and varnished with a clear coating to withstand all conditions. Stackable and with a flexible inlay.

## Big Green Egg accessory boxes

In order to keep your convEggtor, cast iron grind and other utensils safe we've developed special boxes to store these items in your HIVE outdoor kitchen.

## Drawers

Each compartment in your HIVE outdoor kitchen is suited to fit a drawer. Depending on the type of storage required simply add drawers to your design to suit your needs.





*The magic  
is in the  
moment*









# #Jointhehive

HIVE outdoor kitchens are available at

[www.hive.kitchen](http://www.hive.kitchen)

[info@hive.kitchen](mailto:info@hive.kitchen)

[@hive.kitchen](https://www.instagram.com/hive.kitchen)